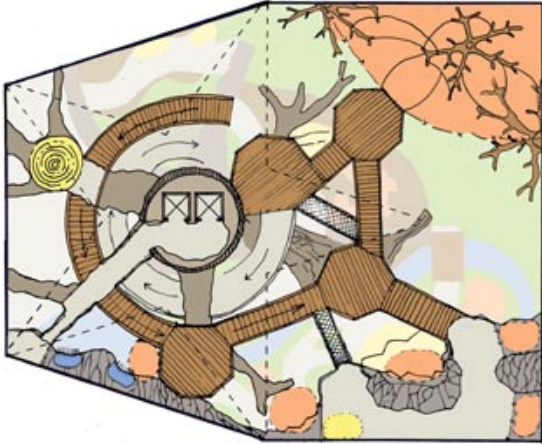


Discovery Center



The Discovery Center is part of the extensive re-design of the Hangzhou Safari Park. The two-story building will provide indoor exhibit space displaying a variety of animals from throughout China and showcase tunnels, nests, and other 'architecture' of the animal kingdom. The animal habitats are complimented by interactive play elements and science-museum-like displays.

The Discovery Center features a giant artificial tree as its centerpiece. A spiral pathway leads into the roots through the underground spider play area. Children crawl the tunnels of the mole rat labyrinth and view the hidden small exhibits of insects and other darkness-loving creatures. The path emerges from the underground along a creek where visitors can scale the heights of a rock wall. The creek is dammed by beavers and entering the oversized structure offers underwater views of busy beavers.

On the boardwalk winding up through the branches of the central tree, the next animal structure is a huge wasp nest, which curious visitors will make buzz. The highest points of the boardwalk brings the visitors to the homes of the monkeys in the uppermost branches and to the nests of the swiftlets built on the top of the cliff.

Discovery Center
Hangzhou Safari Park
Hangzhou, P.R. China
2005-present



Hangzhou Safari Park, P.R. China